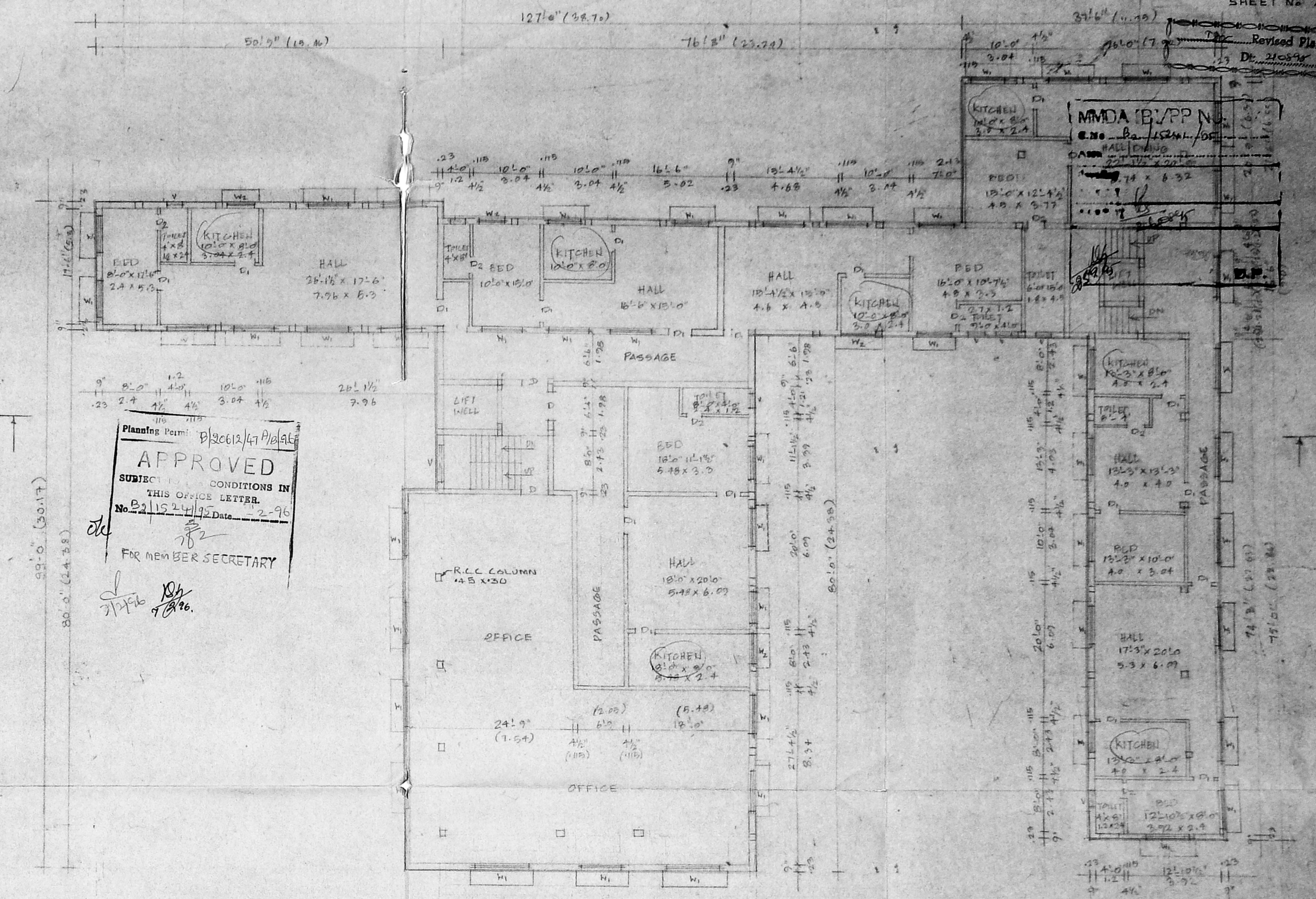
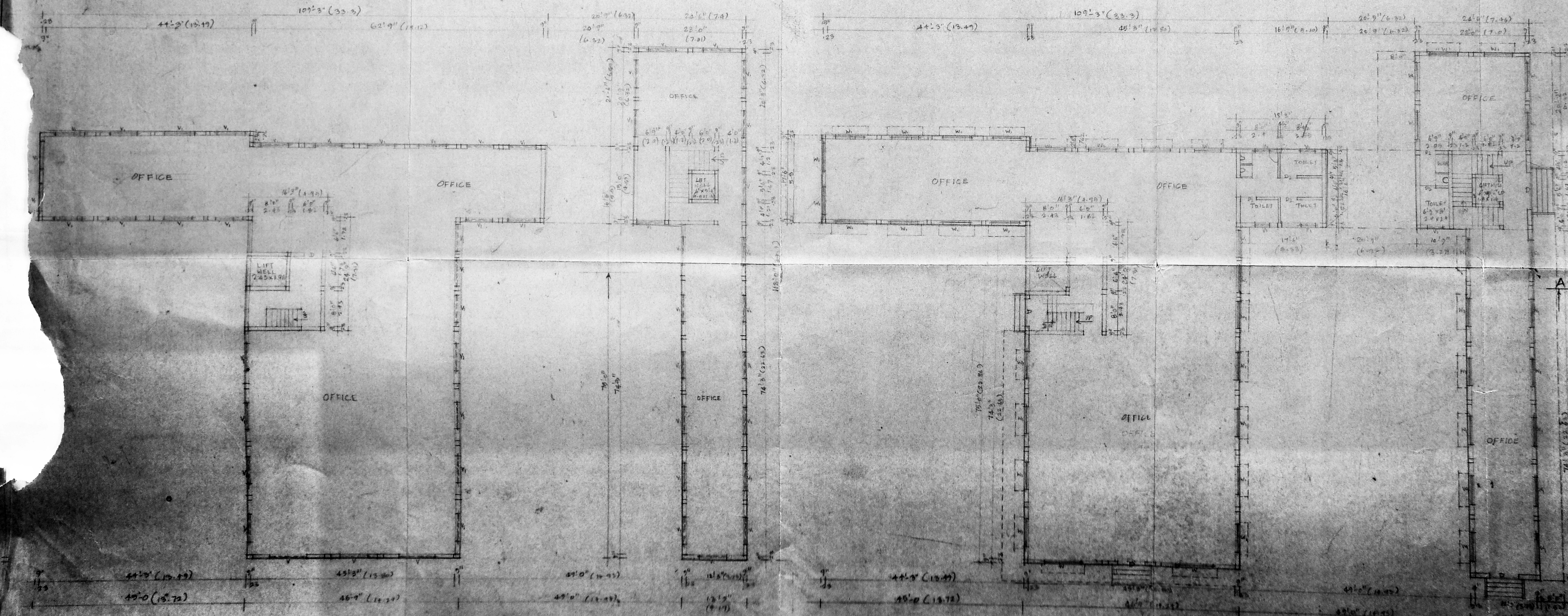


TYPICAL FLOOR PLAN (FIRST AND SECOND FLOOR)

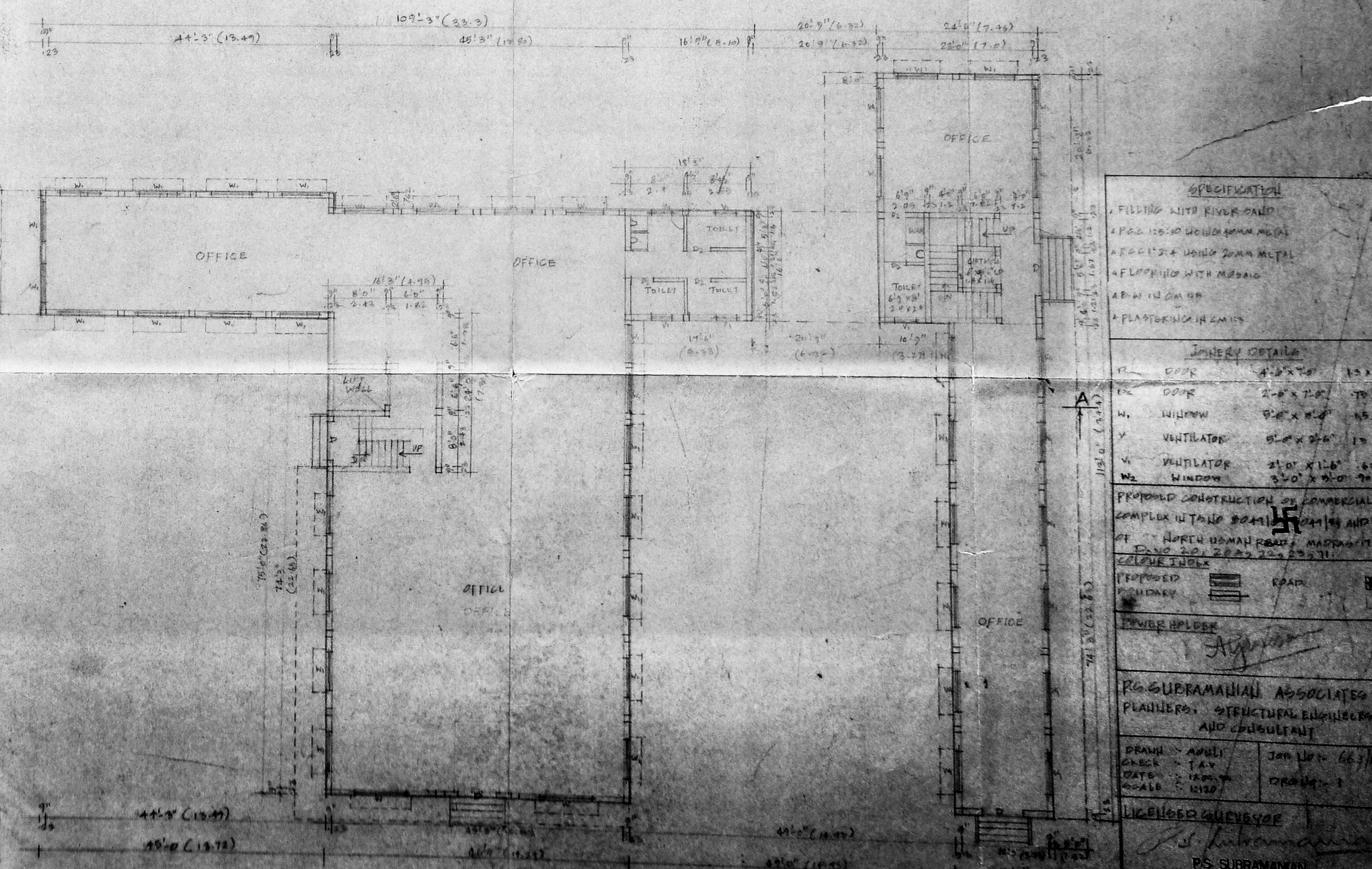


THIRD FLOOR PLAN

Planning Form No. 211524/1979 Date 2-2-96  
**APPROVED**  
 SUBJECT TO CONDITIONS IN THIS OFFICE LETTER  
 FOR MEMBER SECRETARY



BASEMENT FLOOR PLAN



GROUND FLOOR PLAN

**SPECIFICATION**

- FILLING INTO RIVER SAND
- 2 P.C.C. 1:2:4 CONCRETE
- 4 P.C.C. 1:2:4 CONCRETE
- 4 FLOORING WITH M.S.B.O.
- 4 P.W. IN ROOMS
- 4 PLASTERING IN ROOMS

**JOINERY DETAILS**

D	DOOR	4'-0" x 7'-0"	15 X 21
W	WINDOW	2'-0" x 7'-0"	70 X 2
W	WINDOW	3'-0" x 6'-0"	45 X 1
V	VENTILATOR	6'-0" x 2'-0"	15 X 7
V	VENTILATOR	2'-0" x 1'-0"	6 X 3
W	WINDOW	3'-0" x 2'-0"	70 X 2

PERMITTED CONSTRUCTION OF COMMERCIAL COMPLEX IN TAMIL NADU  
 NORTH HUMAN ROAD, MADRAS 600 011  
 DRAWING NO. 211524/1979

**PROPOSED FINISHES**

**POWER SUPPLY**

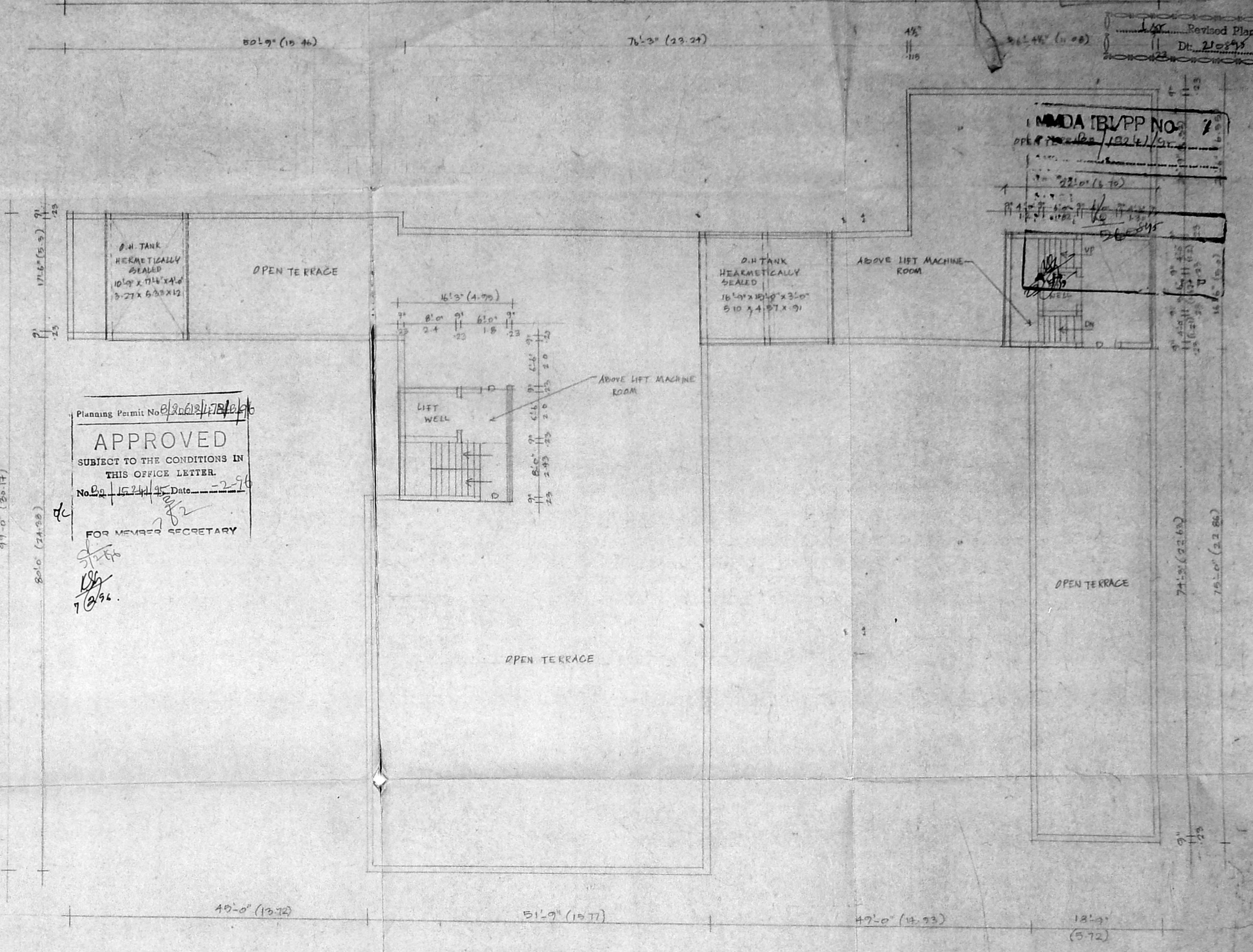
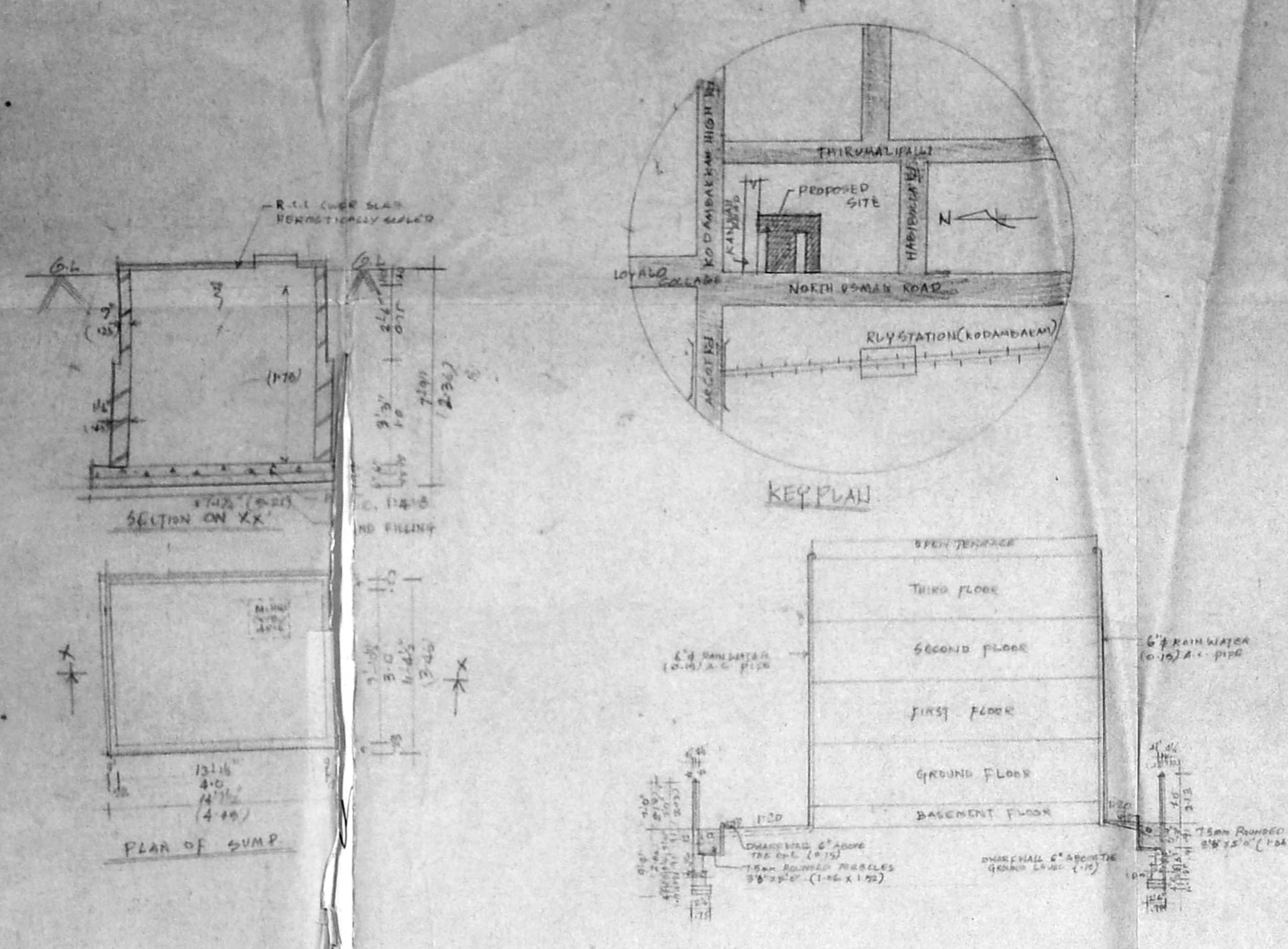
**RE. SUBRAMANIAN ASSOCIATES & PLANNERS, STRUCTURAL ENGINEERS AND CONSULTANTS**

PRAM. - AMUL  
 CHECK - J.A.V.  
 DATE - 18.11.79  
 SCALE - 1/100

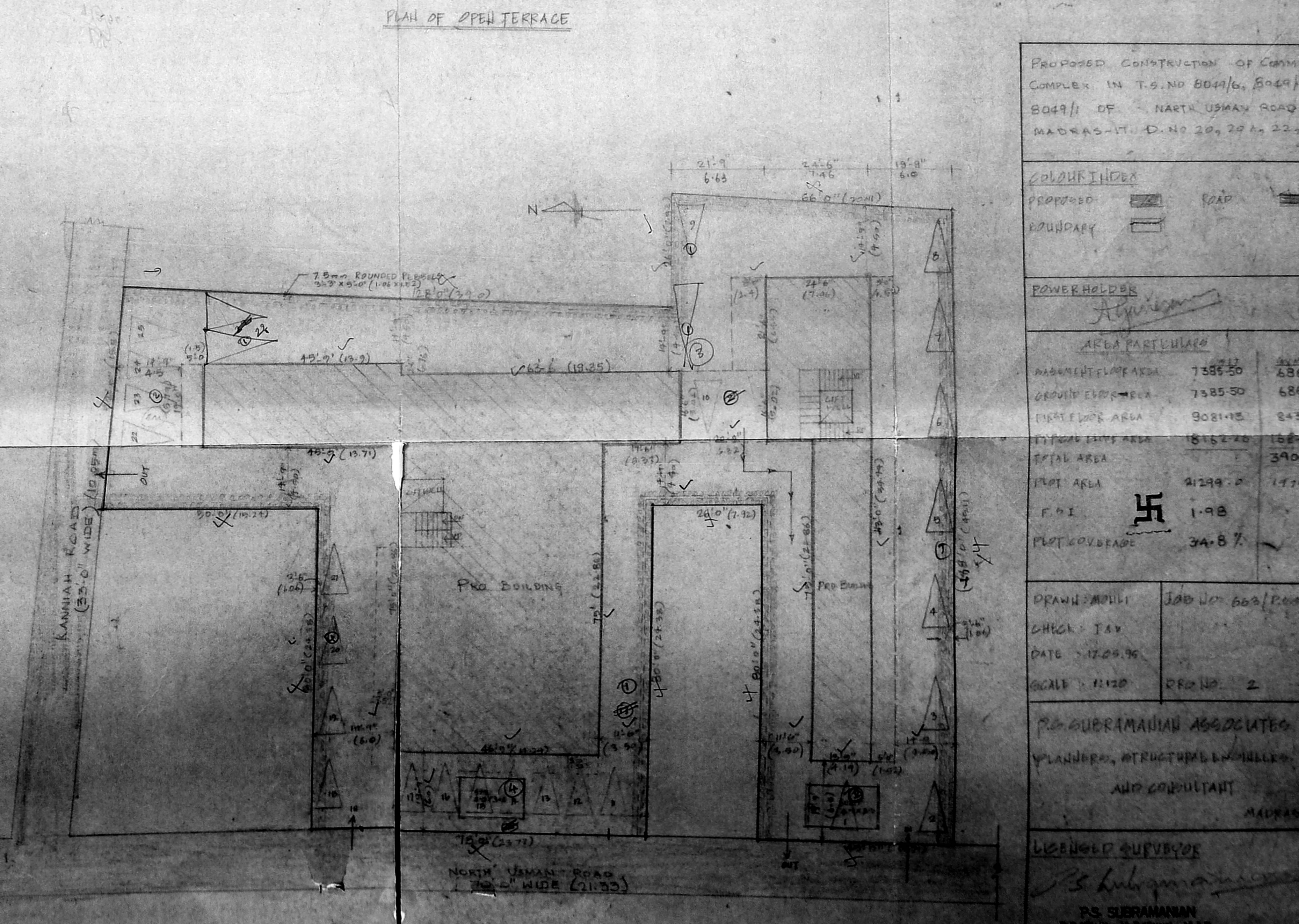
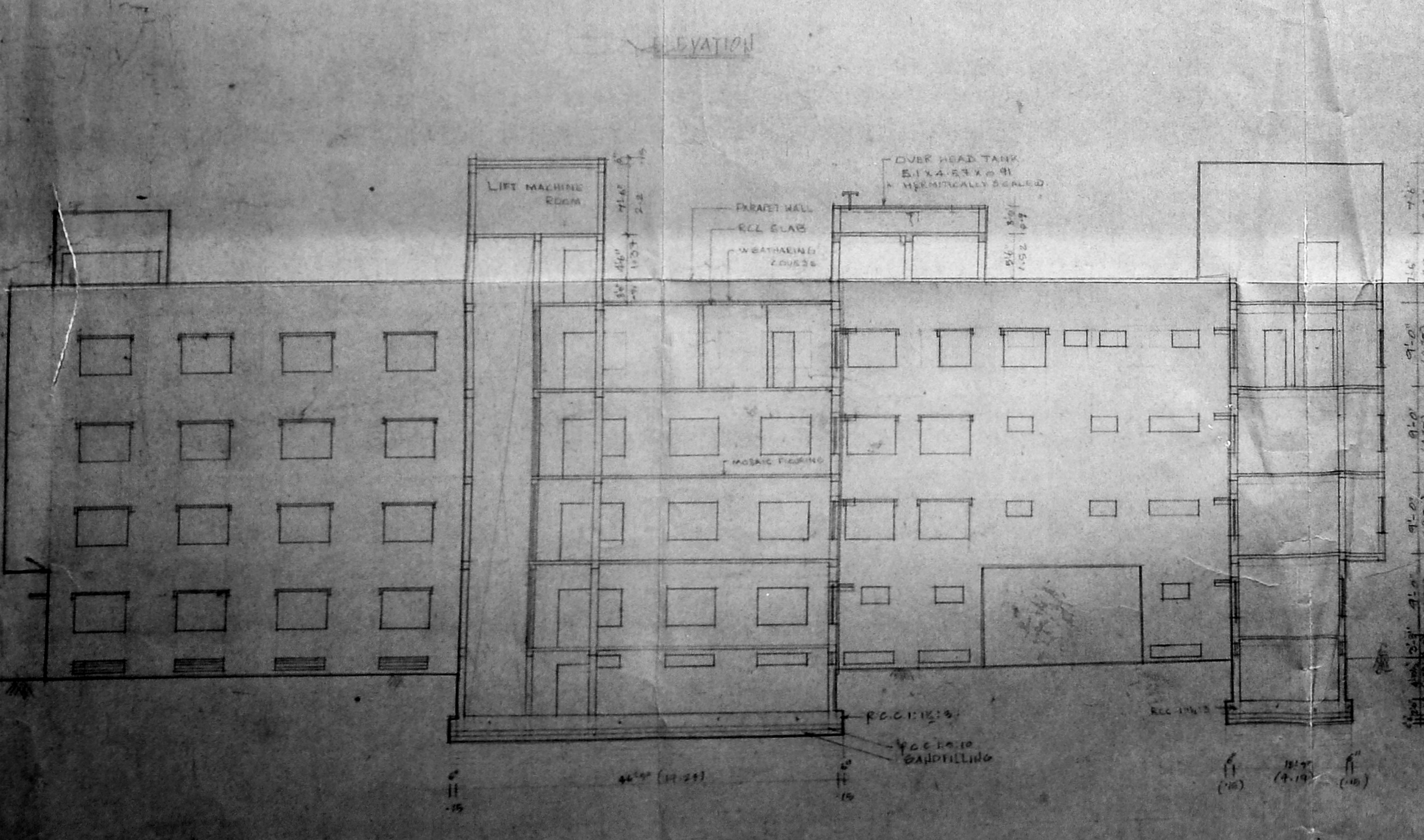
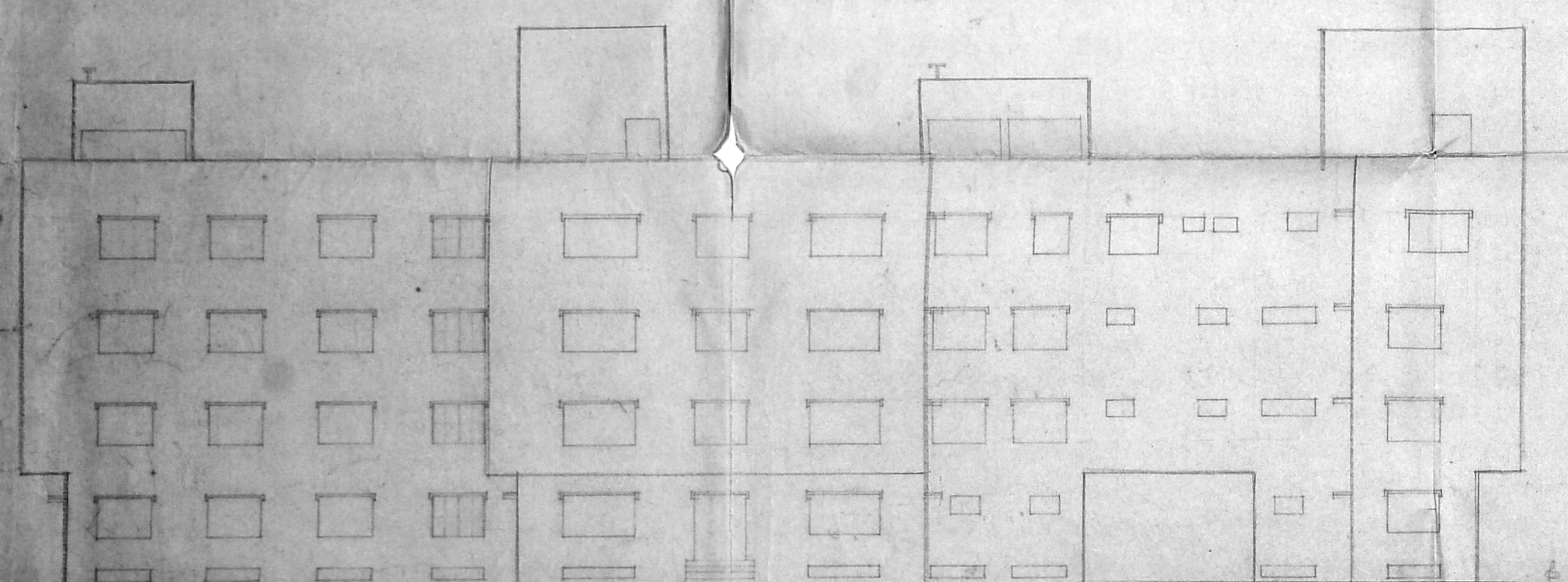
JAN 18 1980  
 DRAWING - 1

**LICENSED ARCHITECT**

**P.S. SUBRAMANIAN**  
 (REGD.) M.E. (Struct. Engrg.)  
 M.C.E. (Arch.)  
 CIVIL AND STRUCTURAL ENGINEER  
 LICENSED ARCHITECT  
 CLASSIFICATION NO. 201  
 CORPORATION OF ARCHITECTS  
 MADRAS - 600 004



Planning Permit No. P/36/17/8/16/6  
**APPROVED**  
 SUBJECT TO THE CONDITIONS IN THIS OFFICE LETTER.  
 No. 15/24/25 Date: 2/2/96  
 FOR MEMBER SECRETARY



PROPOSED CONSTRUCTION OF COMMERCIAL COMPLEX IN T.S. NO 8049/6, 8049/5 AND 8049/1 OF NORTH USMAN ROAD, MADRAS-71. D. NO 20, 20 A, 22, 23

**COLOR INDEX**

PROPOSED	ROAD
BOUNDARY	

**POWER HOLDER**  
*[Signature]*

**AREA PARTICULARS**

BASEMENT FLOOR AREA	7886.50	686.58
GROUND FLOOR AREA	7385.50	686.38
FIRST FLOOR AREA	9081.15	843.97
TERRACE FLOOR AREA	18152.25	1687.78
TOTAL AREA		3904.67
F.P.I. AREA	9129.0	1779.45
F.P.I.	1.98	
PLOT COVERAGE	34.87%	

**DRAWN BY:** JOD DO 602/2004/96  
**CHECK BY:** JAV  
**DATE:** 17.09.96  
**SCALE:** 1/120 REF. NO. 2

**PS. SUBRAMANIAN ASSOCIATES**  
 PLANNERS, ARCHITECTS, ENGINEERS AND CONSULTANTS  
 MADRAS

**LICENSED SURVEYOR**  
*[Signature]*  
 PS. SUBRAMANIAN  
 83, 83/1, 83/2, 83/3, 83/4, 83/5, 83/6, 83/7, 83/8, 83/9, 83/10, 83/11, 83/12, 83/13, 83/14, 83/15, 83/16, 83/17, 83/18, 83/19, 83/20, 83/21, 83/22, 83/23, 83/24, 83/25, 83/26, 83/27, 83/28, 83/29, 83/30, 83/31, 83/32, 83/33, 83/34, 83/35, 83/36, 83/37, 83/38, 83/39, 83/40, 83/41, 83/42, 83/43, 83/44, 83/45, 83/46, 83/47, 83/48, 83/49, 83/50, 83/51, 83/52, 83/53, 83/54, 83/55, 83/56, 83/57, 83/58, 83/59, 83/60, 83/61, 83/62, 83/63, 83/64, 83/65, 83/66, 83/67, 83/68, 83/69, 83/70, 83/71, 83/72, 83/73, 83/74, 83/75, 83/76, 83/77, 83/78, 83/79, 83/80, 83/81, 83/82, 83/83, 83/84, 83/85, 83/86, 83/87, 83/88, 83/89, 83/90, 83/91, 83/92, 83/93, 83/94, 83/95, 83/96, 83/97, 83/98, 83/99, 83/100